

# Mines & Projects in the Gulf Savannah & North West Queensland

*Cairns Mining Conference 2013*



## North West Queensland: An Established Mining Economy

- The world renowned Carpentaria Minerals Belt plays host to the Mount Isa style copper-silver-lead-zinc ore bodies in addition to other large sediment-hosted silver-lead-zinc deposits

## Gulf Savannah: Highly Prospective, Emerging Potential

- Large *Middle Proterozoic fold belts* bring great prospects
- Extension NNW of Mt Isa Inlier – a rare ‘world class’ zone
- Gulf has proximity to Georgina basin in NT
- Rich prospectivity returns again around Croydon and E/NE/SE of Croydon

**Gulf Savannah “Open for Business”**



**CHART 3: QUEENSLAND BASE  
METAL PROSPECTIVITY**



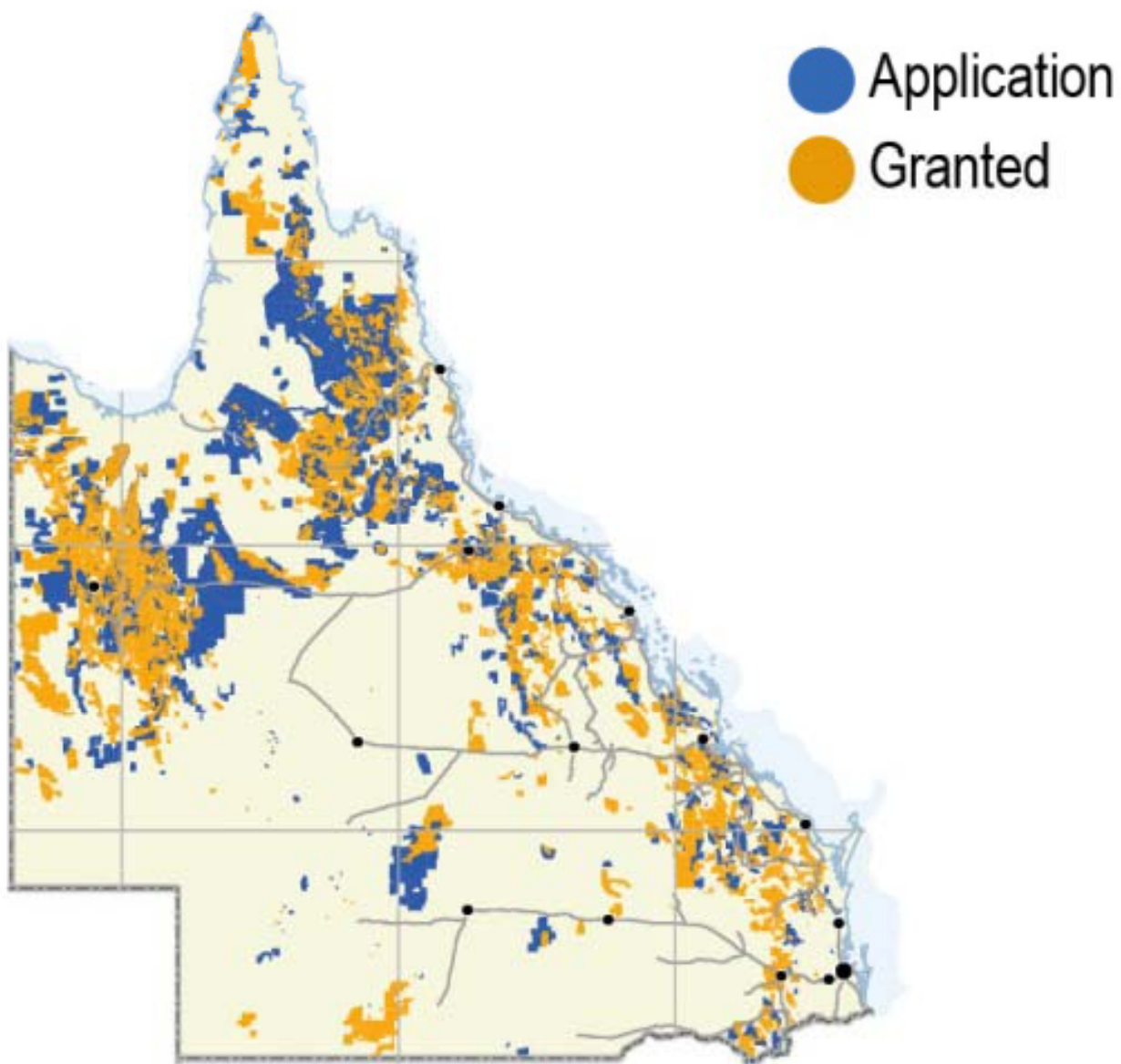
**CHART 4: QUEENSLAND  
GOLD PROSPECTIVITY**

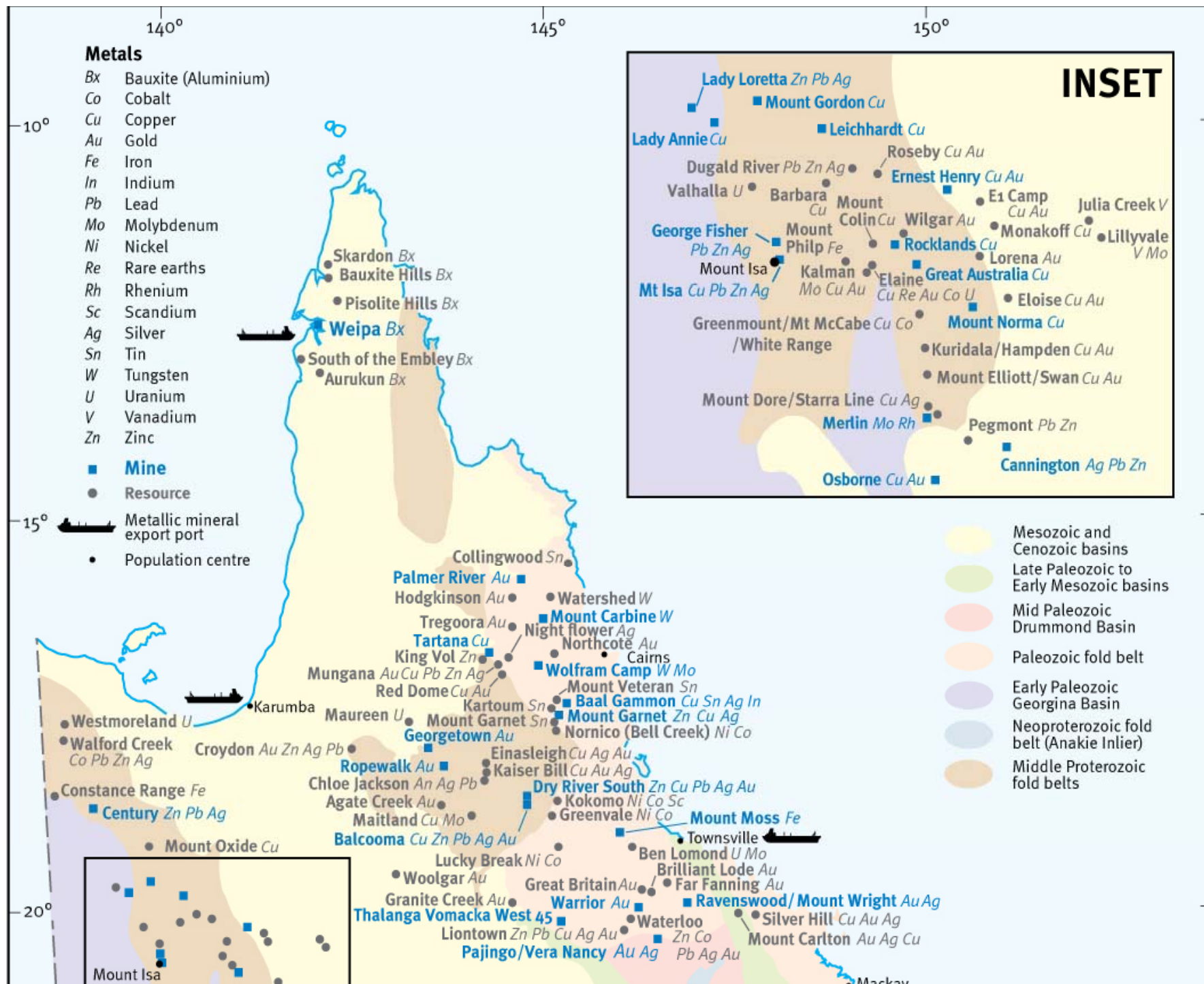


**CHART 5: QUEENSLAND  
URANIUM PROSPECTIVITY**



## CHART 33: EXPLORATION PERMIT MINERAL COVERAGE, JULY 2012







# Present - Century

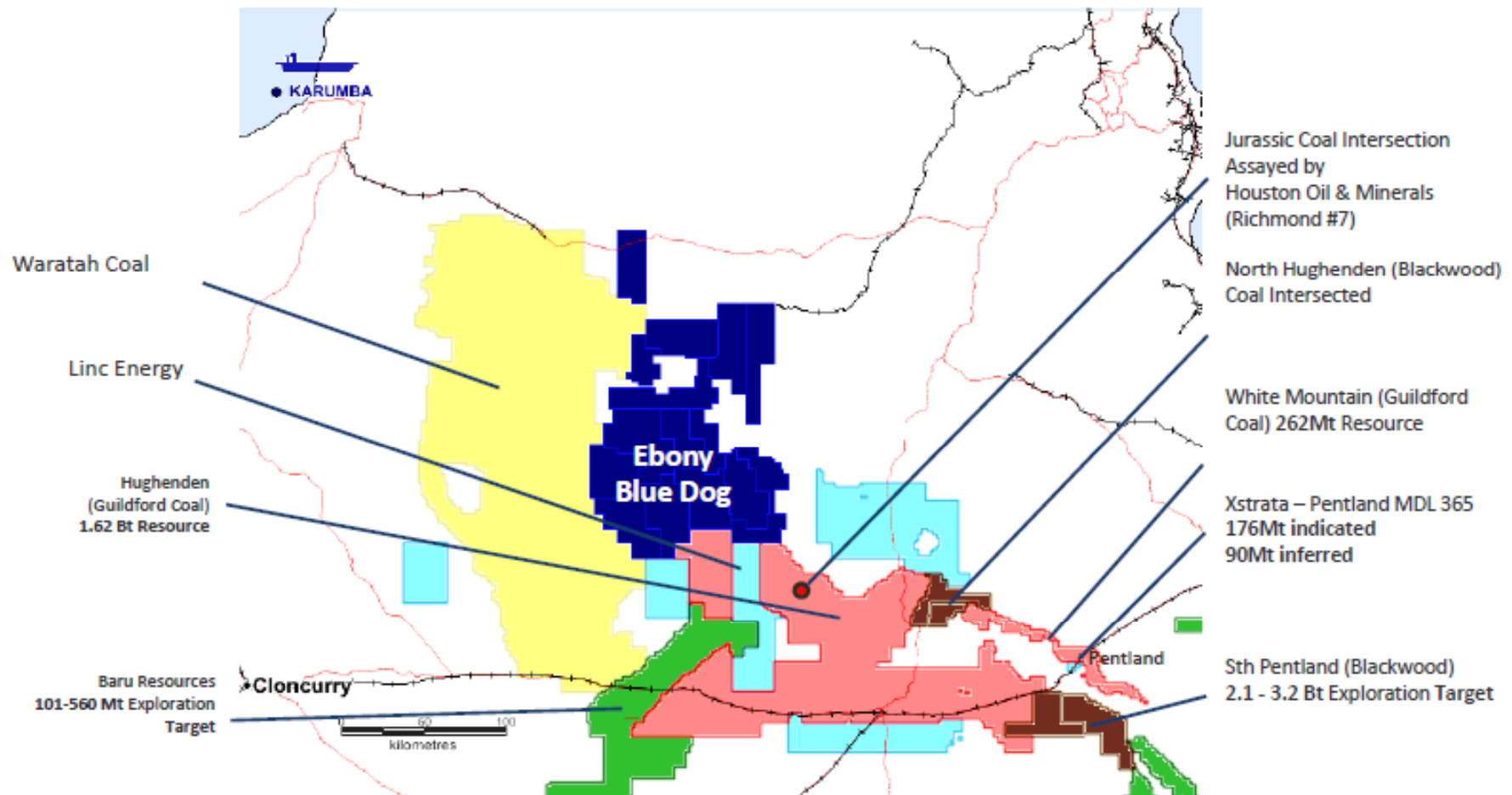
- Remains Australia's largest zinc mine.
- Current mine life to about 2016
- Growth studies investigating alternate uses for MMG's infrastructure post-2016, including:
  - Using smaller zinc-lead-silver deposits for small mines operation;
  - Potential phosphate business; and
  - Viability of tailings retreatment;
- Progressive rehabilitation of Century open pit in preparation for mine closure



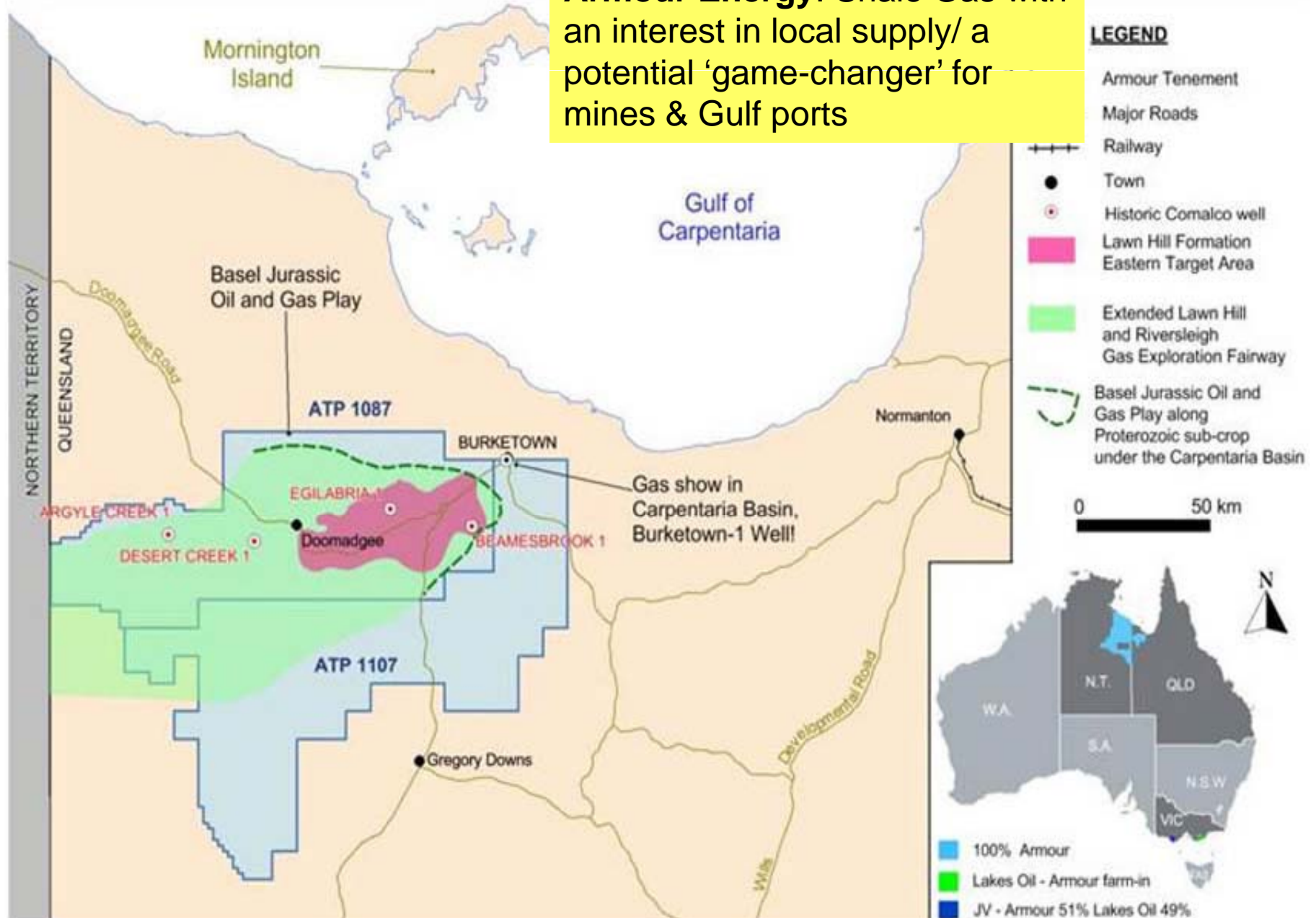
More than 20% of Century's workforce identify as being from local Indigenous communities.



## PROXIMITY TO COAL AND INFRASTRUCTURE



**Armour Energy:** Shale Gas with an interest in local supply/ a potential 'game-changer' for mines & Gulf ports





# Air & Sea Ports

- **Port of Karumba**
  - Access to Asia
  - Qld's 6<sup>th</sup> most valuable port
- **Normanton**
  - 1676m sealed runway

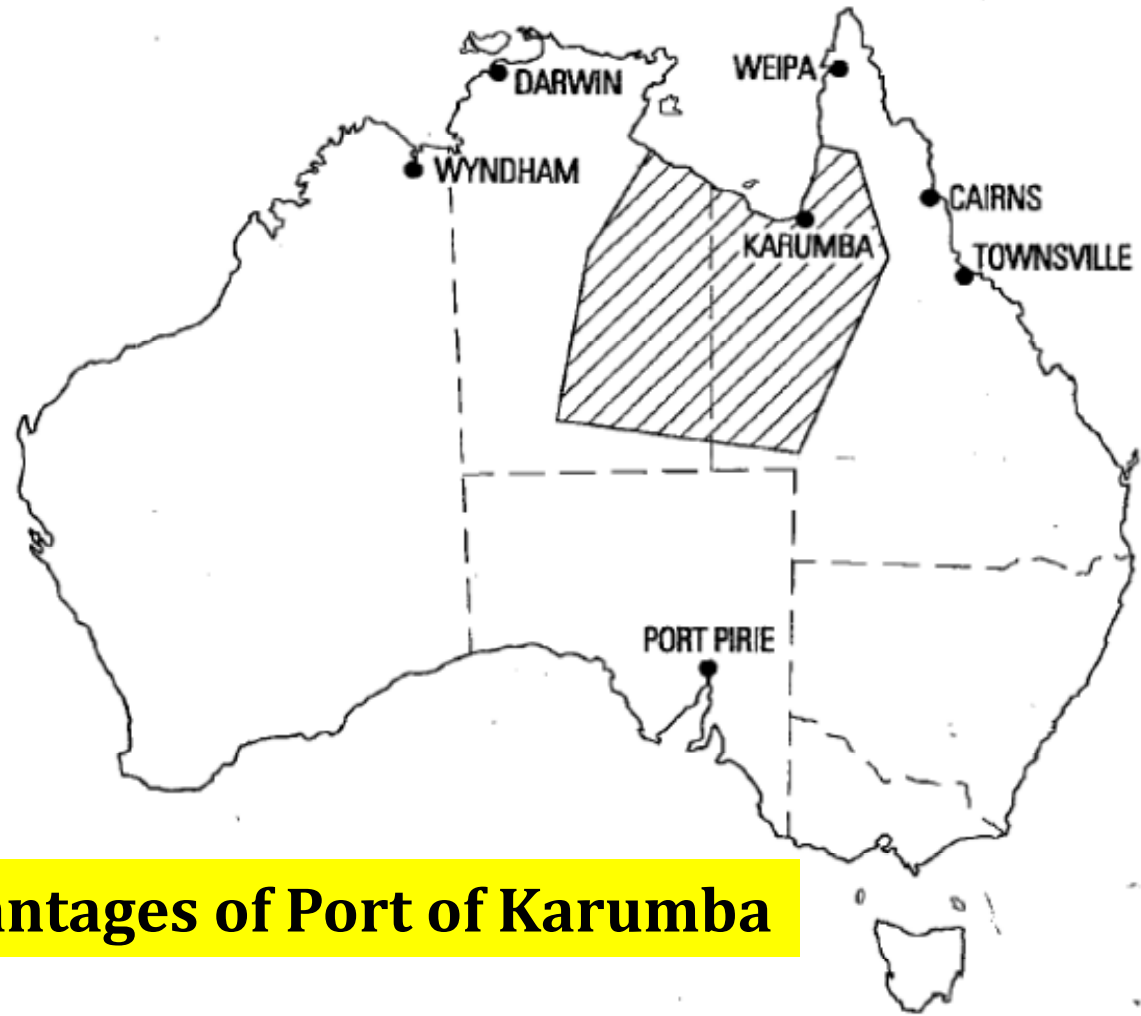


Gulf Savannah “Open for Business”

# GEOGRAPHICAL CATCHMENT AREA OF KARUMBA (CLOSEST SIGNIFICANT SEAPORT) & COMPETING SEAPORTS AT BOUNDARIES

Source: Cummings Economics

Port	Port	NM	Days
Karumba	Shanghai	3700	13
Brisbane	Shanghai	4740	17
Townsville	Shanghai	4107	14
Karumba	Chennai	4711	16
Brisbane	Chennai	5810	20
Townsville	Chennai	5177	18



## Comparative Advantages of Port of Karumba

## Challenges

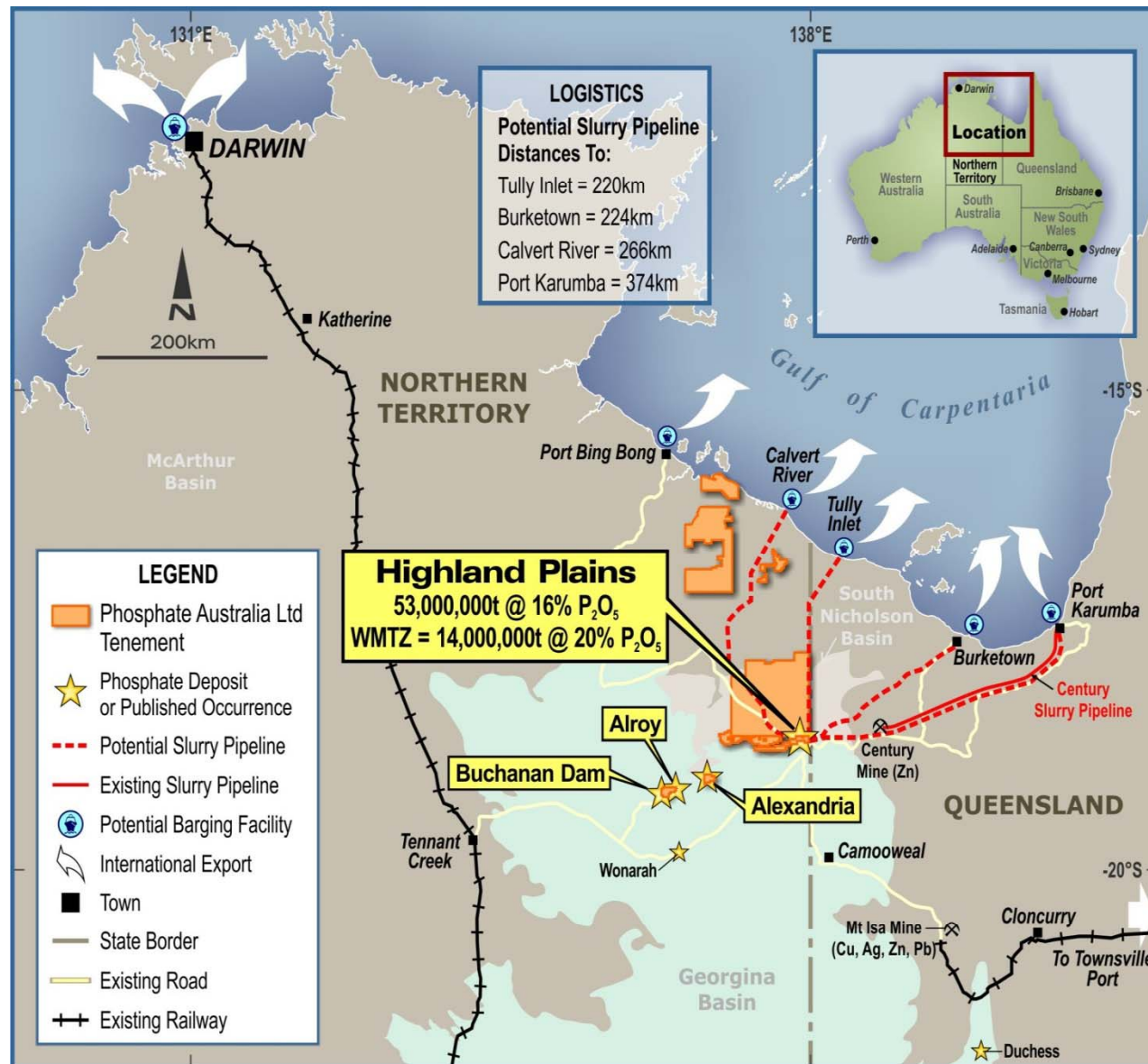
- Closure of MMG Century Mine who fully funds the Port channel infrastructure

## Opportunities

- Karumba has capacity for significant Port developments
  - Karumba has land adjacent to the Norman River suitable for significant industrial & Port storage facilities
  - Karumba's Norman River provides deep water frontage suitable for future wharf developments
  - Karumba's existing channel has capacity to double existing export volumes, the channel could be further deepened to provide staged capacity increases



# Highland Plains – Phosphate Project Location



1. POZ Flagship Project at Highland Plains in the NT has a JORC compliant inferred resource of 53,000,000 tonnes @16% $P_2O_5$
2. Other POZ Phosphate projects in the vicinity with historic drilling intersections include Buchanan Dam, Alroy and Alexandria
3. Projects owned 100% by POZ with no private royalties



# Mining

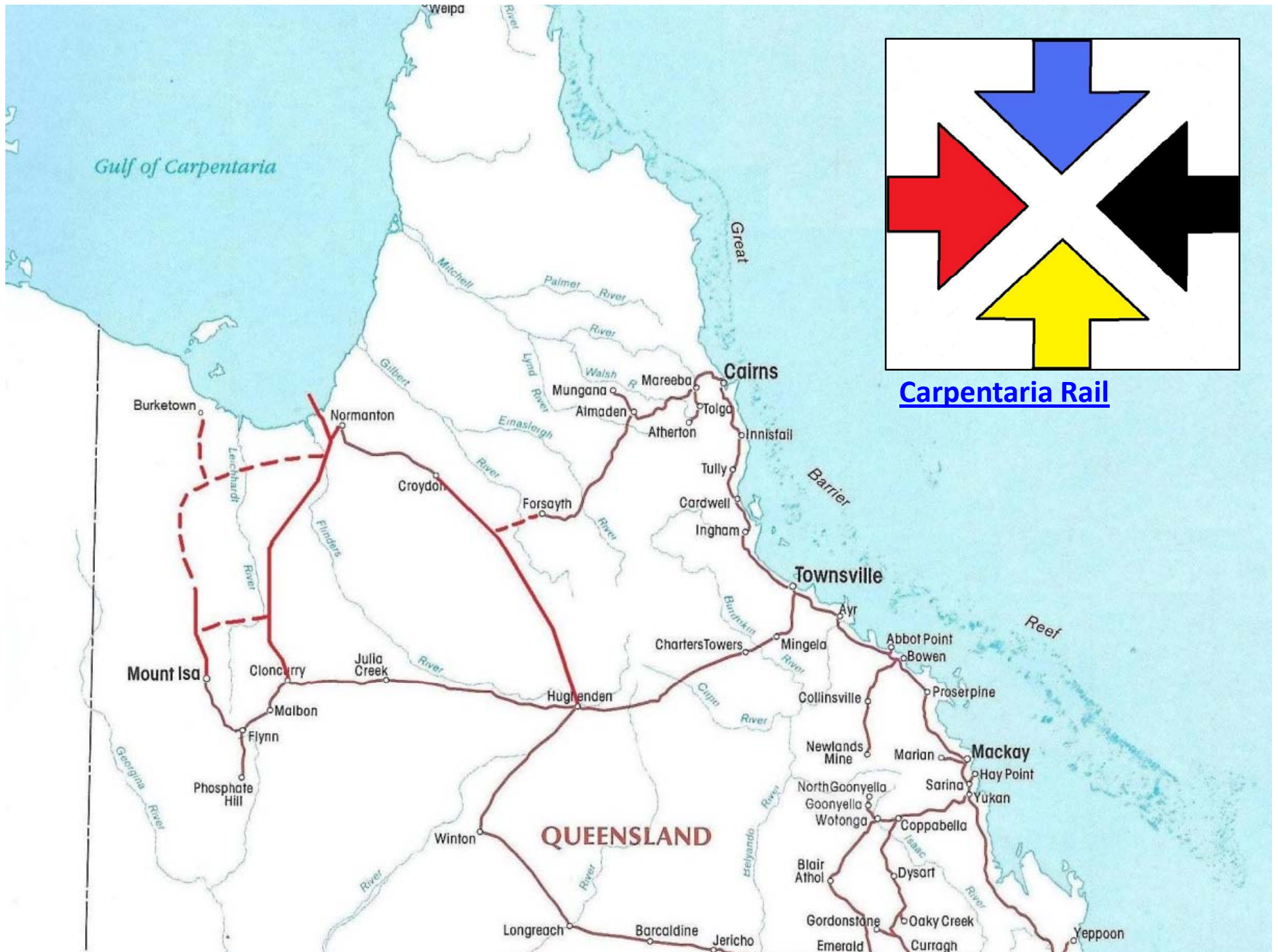
## ... MAJOR DEVELOPMENTS ON HORIZON ...

- “A number of advanced projects that could transform the area into a significant mining province”
- “Development is likely to involve additional pipelines to the Gulf, port development and other road infrastructure needs”

*Cummings Economics 2010*

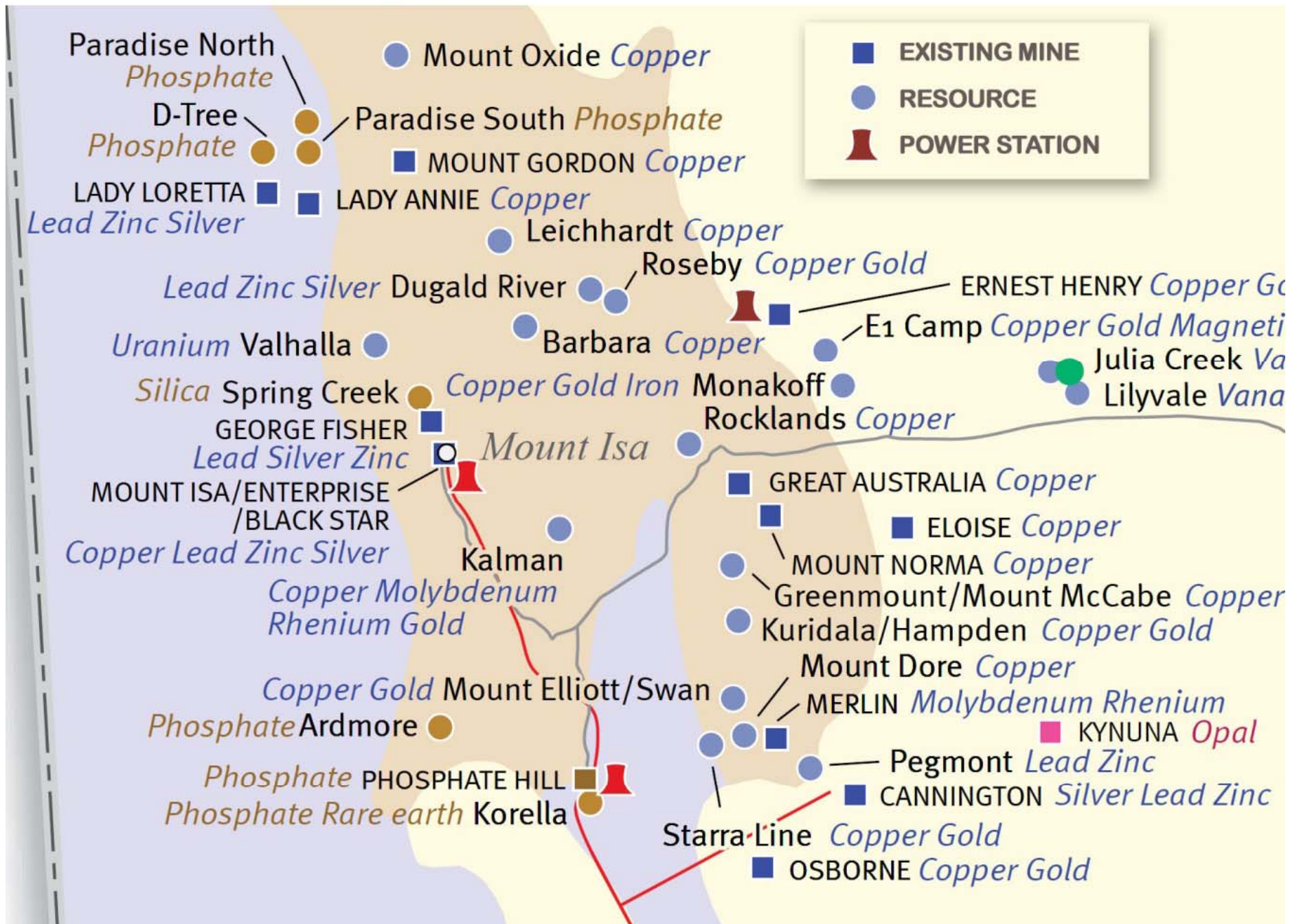
Gulf Savannah “Open for Business”







# NORTHWEST QUEENSLAND



# Dugald River - Present

- Ahead of schedule mine development, including likely world record
- Advancement of surface works
- Commencement of permanent site infrastructure construction
- Award of key contracts, including for processing plant, road upgrades and permanent village accommodation
- Integration of project and Queensland Operations teams



PAF pad, June 2013



## MINERAL PROJECTS OF THE NORTHERN TERRITORY



Produced by the Northern Territory Geological Survey, March 2010.

0 100 200 km



