



CAIRNS & MINING CONFERENCE 2011

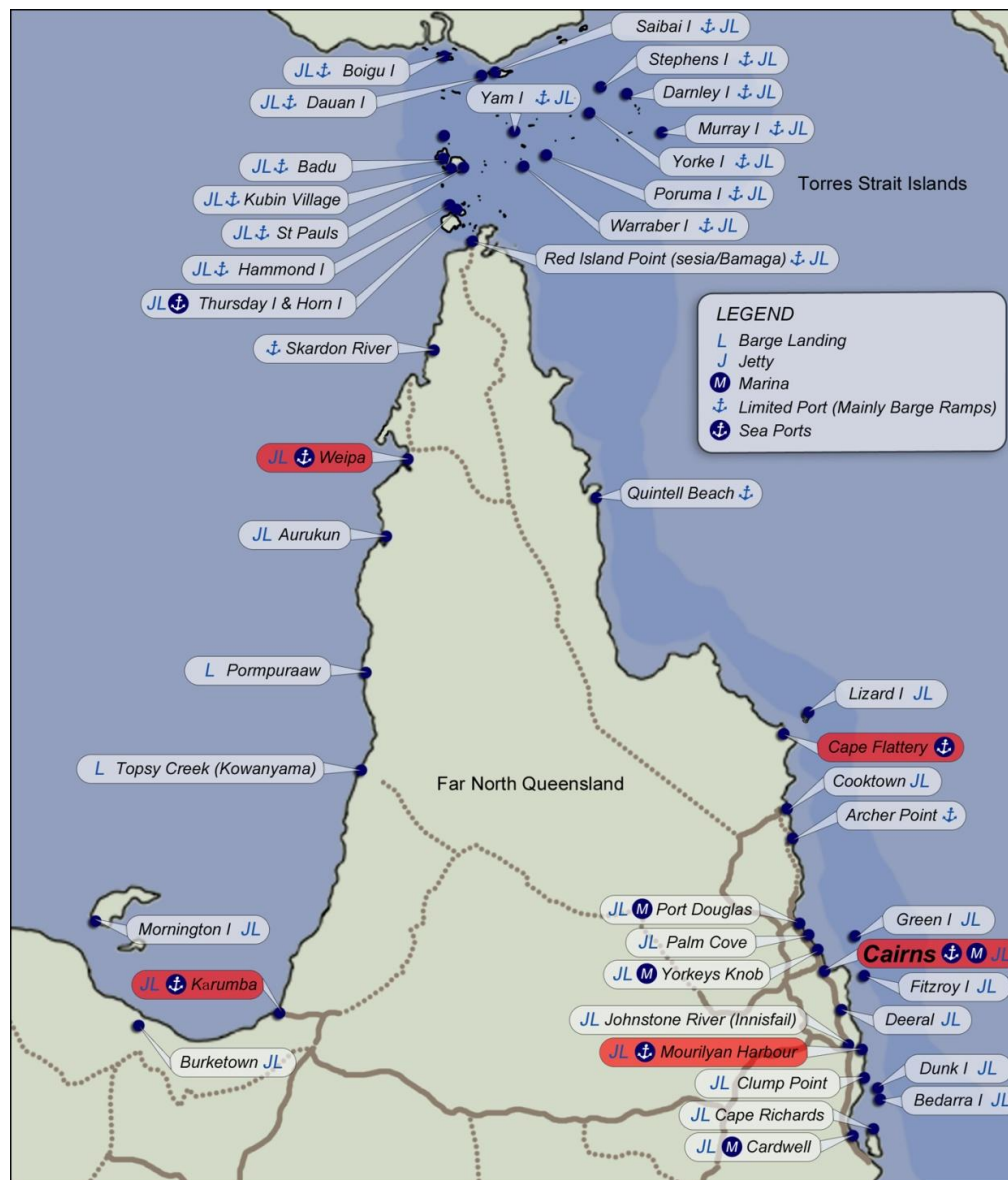
“CURRENT INFRASTRUCTURE & THE CHALLENGES IT PRESENTS TO A GROWING FAR NORTH QUEENSLAND MINING INDUSTRY”



**ADDRESS TO
CAIRNS & MINING CONFERENCE
BY
W S (BILL) CUMMINGS**

07 October 2011

**BILL SMITH AND HODGKINSON MINERS
IN 1875 DEMONSTRATED IMPORTANCE
OF LINKING MINERAL FIELDS TO
GOOD PORT SITES BY THE SHORTEST
TRANSPORT EFFICIENT ROUTE.**



COMPARATIVE SEAPORT TONNAGES 2009/10

Mackay Region (Incl. Abbott Point)	99m tonnes
Fitzroy Region (Incl. Gladstone)	79m tonnes
Brisbane / South East QLD	32m tonnes
South Australia	25m tonnes
Cairns / Far North	22m tonnes
Northern Territory	21m tonnes
Tasmania	19m tonnes
Townsville/ Northern Region	10m tonnes

INFRASTRUCTURE FOR HINTERLAND MINING DEVELOPMENTS

NUMBER OF BASIC REALITIES

FIRST REALITY :

INWARD MOVEMENTS DOMINATED BY CAIRNS

ROAD	B-DOUBLES FROM SOUTH.
RAIL	ABOUT 13 TRAINS DIRECT FROM BRISBANE EACH WEEK.
SEA	PETROLEUM PRODUCTS FERTILISERS

**CAIRNS 60% OF POPULATION, MOST
CONSTRUCTION, WAREHOUSING,
REDISTRIBUTION TO REGION & NEAR NORTH.**

MAJOR FREIGHT HUB - PORTSMITH AREA.

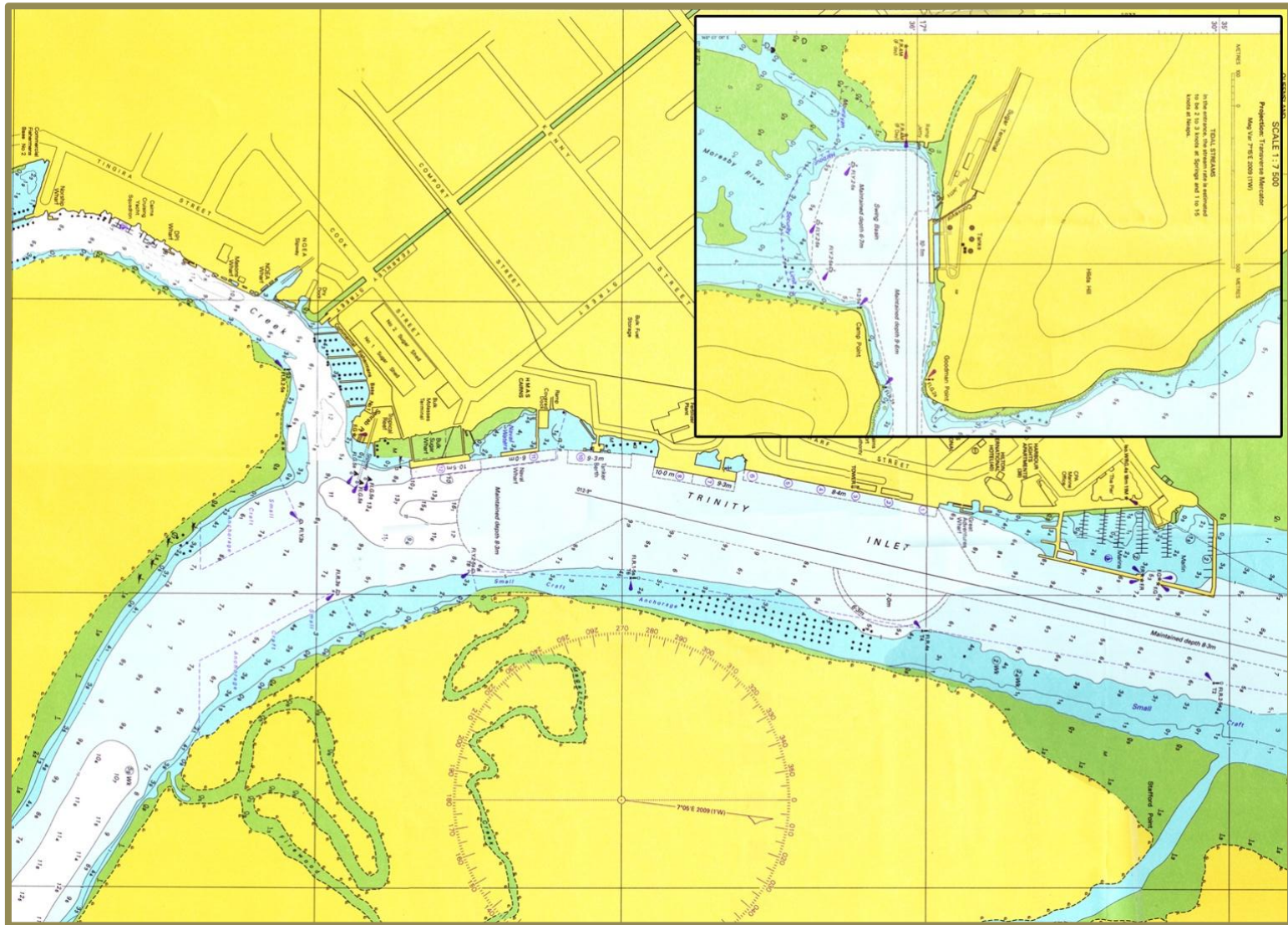
OUTWARD MOVEMENTS DIFFERENT PATTERN

- BULK SUGAR & MOLASSES : CAIRNS & MOURILYAN SEAPORTS.
- FRUIT & VEGETABLES : ROAD, SOME RAIL TO SOUTH.
- CATTLE : ROAD TO SOUTH.
- KAGARA MINERALS TO TOWNSVILLE
SUNMETALS REFINERY/EXPORT.





CAIRNS & MOURILYAN PORTS TO SCALE



PLAN OF CAIRNS HARBOUR



MINERALS BULK OR CONTAINERISED

MOURILYAN
currently

- Bulk Sugar Wharf.
- Upgrading needed for Bulk Minerals/Containers

CAIRNS
currently

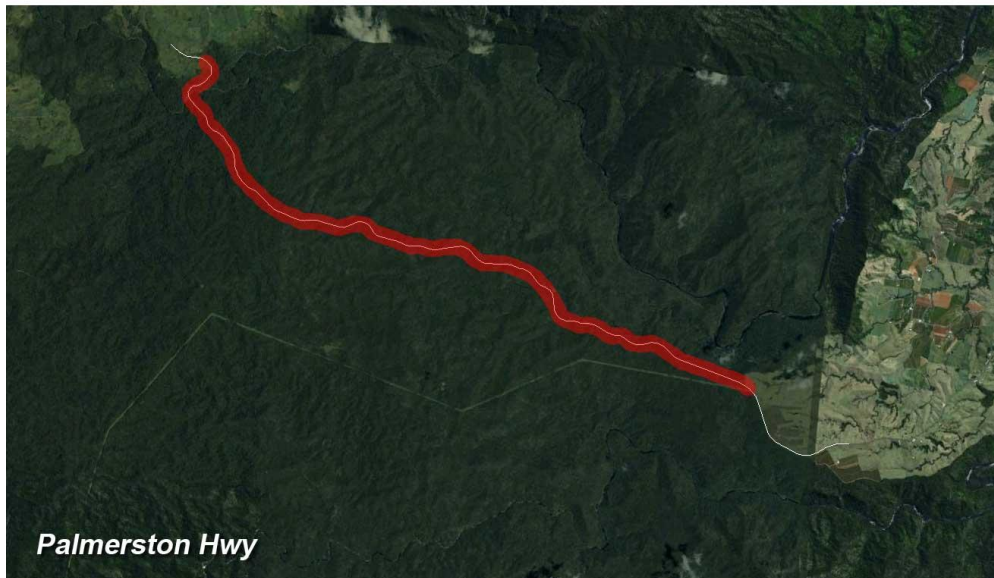
- General Cargo Wharves
- Bulk Fertiliser Imports
- Container handling
- 2nd Sugar Shed?

MAXIMUM HEIGHTS ABOVE SEA LEVEL OF TRANSPORT ROUTES

	FEET	METERS
KURANDA RANGE RD		
RAIL	1140	347
ROAD	1520	463
REX RANGE RD	1524	465
GILLIES HWY	2740	829
PALMERSTON HWY	2814	853

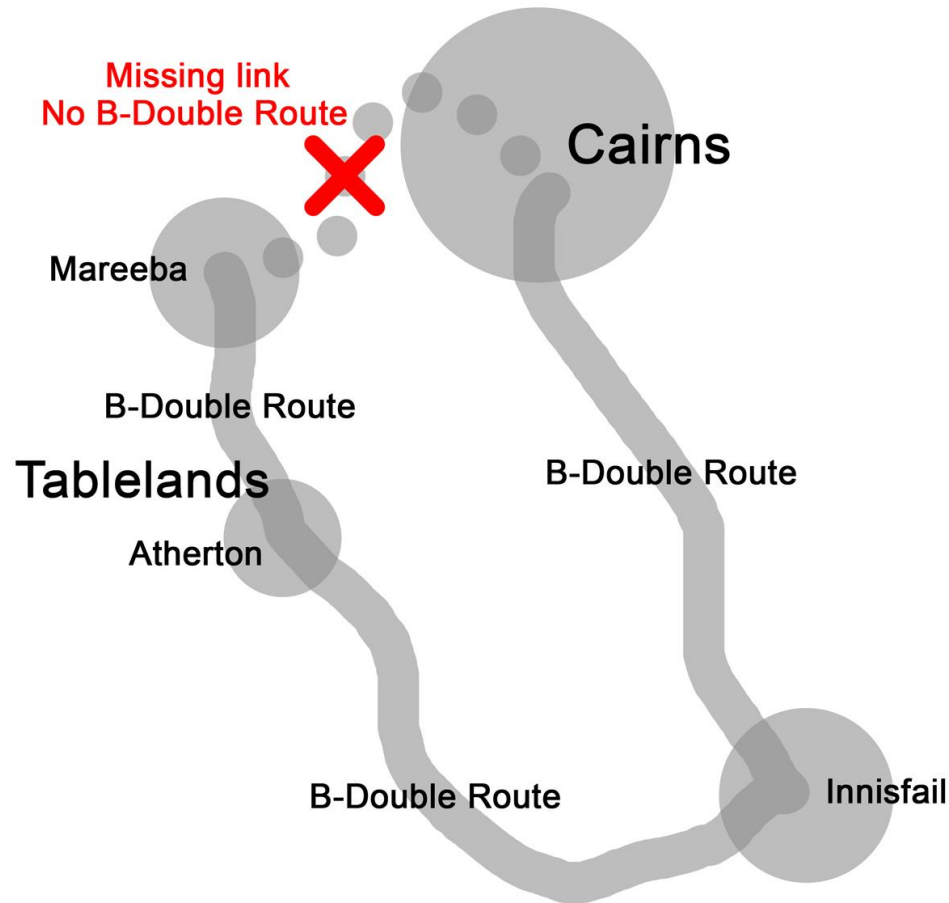


MAP OF RAINFOREST SECTIONS



A 'Ferrari' instead
of a 'Kingswood'

KURANDA RANGE ROAD MISSING LINK

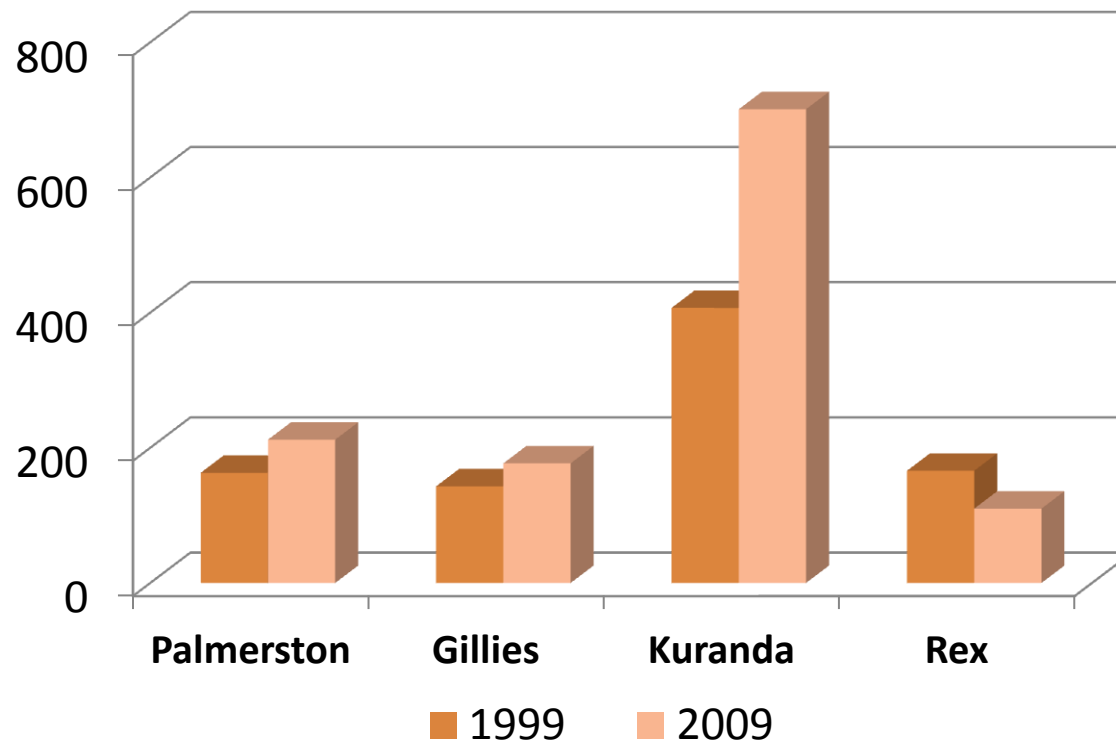


ROAD UPGRADING TO PORTS

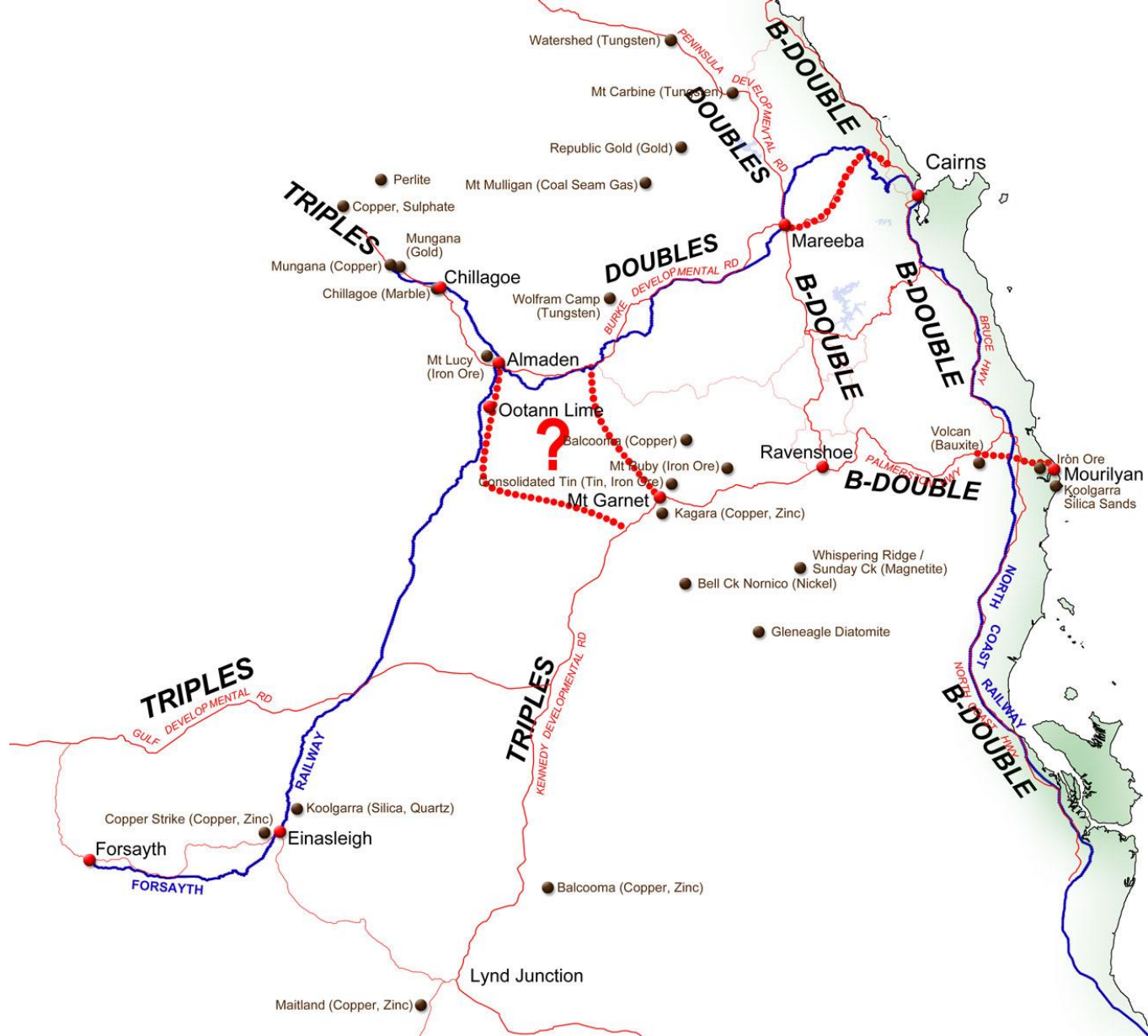
KURANDA RANGE	TO B-DOUBLE
----------------------	--------------------

PALMERSTON	UPGRADE LINK TO PORT
-------------------	-----------------------------

RANGE ROAD AADTS HEAVY VEHICLES



	Palmerston	Gillies	Kuranda	Rex
1999	163	143	407	166
2009	212	177	701	110





WIDER ROAD LINKS ALSO IMPORTANT

- **TO GULF**
- **TO MT ISA**
(VIA LYND/HANN HIGHWAY)
- **TO CENTRAL Q'LD**
(VIA GREGORY DEVELOPMENTAL RD)



- **BASE LOAD CARGOES**
 - **LIME**
 - **FREPORT TYPE MINE CONSOLIDATION**
- **MEETING SPECIAL INPUTS OF MINES
IN PNG & LOCALLY : IMPORTANT**
- **BACKLOADING**

POTENTIAL SHIPPING LINKS WITH ASIA

- **CONTAINERISED MINERALS**
- **PRIMARY PRODUCTS**
- **DIRECT IMPORTS INCLUDING MINE INPUTS**

CONTAINER CRANE FACILITIES

ENERGY

LOCAL GENERATION

- COAL SEAM GAS
- GEO THERMALS

GRID TO REMOTE AREAS

AIRPORT INFRASTRUCTURE GOOD

**TOURISM EXPANSION
1980'S / 1990'S**

AIRPORT UPGRADING VITAL

**MINING EXPANSION
CURRENT**

PORTS & LAND TRANSPORT

